

LOFT RIDGE ONE-COLOR SCHEME INFORMATION

SPRING 2022

Background: Loft Ridge Baseline Colors and Color Schemes

When Loft Ridge was built in the 1980's, every home was assigned a color scheme which became part of the permanent record for that home and the entire Loft Ridge community. The original color scheme assigned to every home in Loft Ridge is available on our website in the document titled "Original Color Schemes by Address," which is located on the page "Loft Ridge Community Handbook and Rules" under the "Community" tab.

The color schemes in our community were based upon the McCormick Paint line of colors at the time, as selected by the builder, and these continue to serve as our baseline. Over time, the names of some of these paint colors have changed, and others are not included in current McCormick brochures and paint color fans. Although these original colors can still be matched at the McCormick store, a swatch of the color is needed, as the company does not have access to the older paint colors by name. For this reason, and to introduce some updated colors into our community, in 2021 the ACC undertook a project to revise the Loft Ridge paint schemes.

The New Color Scheme

As in the past, homeowners may choose any paint color among the 20 available to paint their front doors. For homes having decorative shingles, they must be painted the same color as the front door. When repainting their front doors (and decorative shingles where applicable), homeowners may select either:

- The same color as the existing color, if it remains in the one-color palette,
- A replacement color, if the existing color has been replaced by a new color (see attached chart),
or
- An entirely new color from the new one-color palette, upon approval by the ACC.

NOTE: Not all former colors have been replaced by a new color. If a replacement color is not available, the homeowner must submit an RFC before painting with a new color from the new palette.

NOTE: For homeowners who are touching up trim or painting only sections of trim or a portion of the decorative shingles, the existing color must be matched. If a new color is chosen from the applicable palette, all trim or architectural features must be painted at the same time.

Rules and Guidelines for Exterior Painting and Color Schemes

Please see the **Painting, Exterior** section of the Loft Ridge Handbook for more detailed guidelines on exterior painting. A separate section, **Siding**, addresses the painting of siding.

The color charts referenced above can be found on the Loft Ridge website, www.loftridge.com, on the “Loft Ridge Community Handbook and Rules” page under the “Community” tab. The list of original paint schemes for each home, and the retired color schemes, are also available for reference.

Additional Information About Painting and Paint Schemes

- A list of paint formulas for the original Loft Ridge colors was previously made available on the Loft Ridge website. However, experience has shown that these formulas are not reliably accurate. Because of this, the ACC will revise the paint colors as needed.
- Homeowners are not required to use McCormick paint when painting their homes, and the HOA does not endorse any particular brand of paint. McCormick was initially used by the builder, and it may be easier to obtain the paint colors by name at a McCormick store. However, if another brand of paint is chosen, it must match the approved McCormick brand color. The ACC has attempted to match the McCormick colors presented on the website as closely as possible to the swatches from McCormick materials. However, colors may not be completely accurate due to changes when scanning or individual monitor settings. It is best to obtain a color swatch from the McCormick store to bring to another store for matching.
- The nearest McCormick store locations are:

4603 Eisenhower Ave

Alexandria, Virginia 22304

Tel: (703) 838-0550

4676 King St

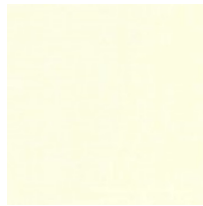
Alexandria, Virginia 22302

Tel: (703) 379-0100

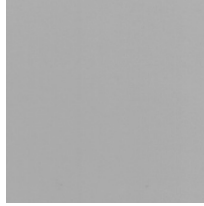
New Loft Ridge One Color Paint Scheme

For Medallion Court and Evergreen Knoll Court ONLY

The same color must be applied to the front door and all decorative shingles (for houses having decorative shingles)



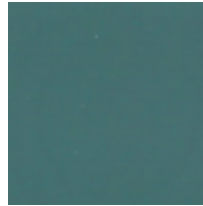
Amber White



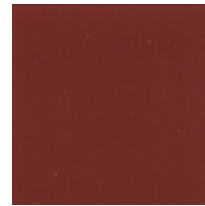
Flintstone



Cactus Valley



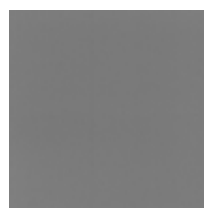
Fenwick



Farmhouse Red



Putty Hill



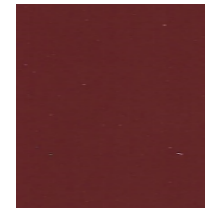
Smokey Pewter



Chic Shade



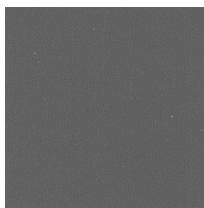
Thomas Point



Richmond



October Harvest



Hearthstone



Sonata



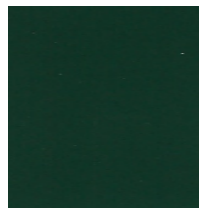
Star Studded



Kingston Clay



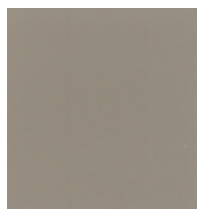
Black



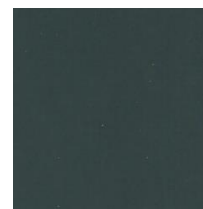
Dominion



Plum Perfect



Grey Flannel



Carolina Slate